

HIA 101

**A QUICK GUIDE TO
EVERYTHING YOU NEED TO KNOW
TO IMPRESS YOUR FRIENDS AND COLLEAGUES.**

HEALTHIMPACT
PROJECT

ADVANCING SMARTER POLICIES FOR HEALTHIER COMMUNITIES
www.healthimpactproject.org

CALIFORNIA
ENVIRONMENTAL
HEALTH TRACKING
PROGRAM

1

What is
HIA?

HIA IS

“a **combination of procedures, methods and tools** by which a policy, a program or project may be judged as to its potential effects on the health of a population and the distribution of effects within the population”

(GOTHENBURG CONSENSUS PAPER, 1999)

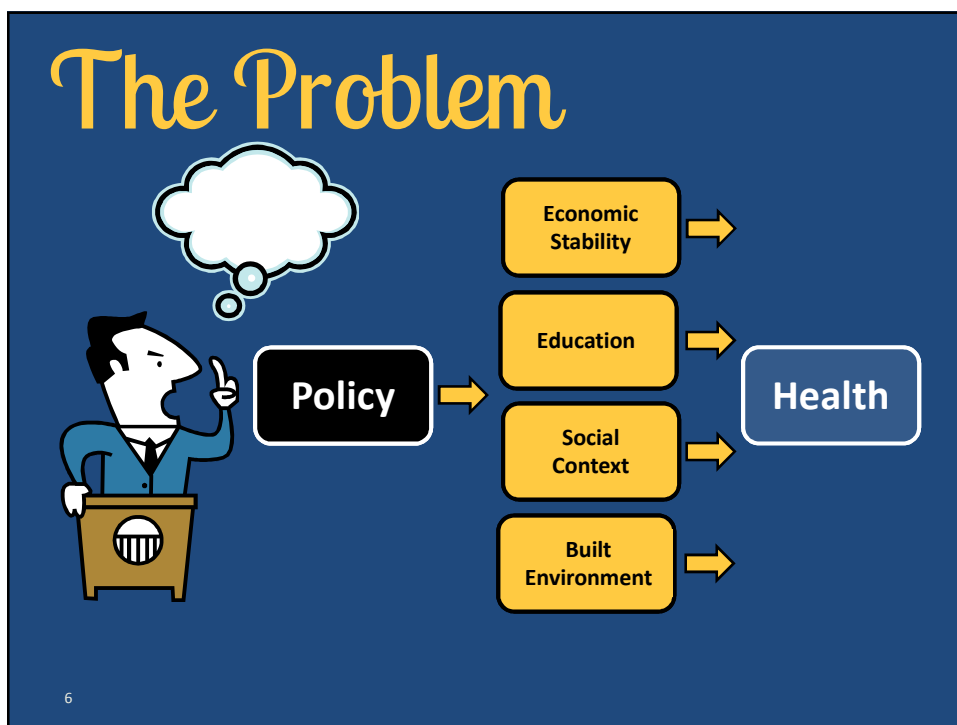
HIA in a nutshell

- LOOKS AT UNINTENDED HEALTH EFFECTS
- PURPOSE IS TO INFORM DECISION-MAKING
- 5 STEPS
- SYSTEMATIC BUT FLEXIBLE

2

WHY

is HIA done?



- To **identify harms & benefits** before decisions are made.
- To inform **discussions of the trade-offs** of a policy/plan/project/program.
- To identify **evidence-based strategies** to promote health & prevent disease.
- To **increase transparency**, support inclusiveness, democracy, and community engagement in the policy decision-making process.
- To help shift decision making from an economic to **quality of life** framework.
- To meet regulatory requirements.

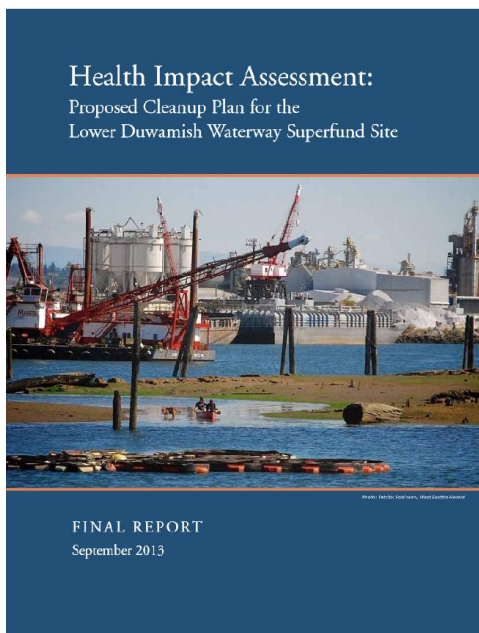
Source: Human Impact Partners, HIA Toolkit, 3rd Edition and other sources

WHY WOULD GOVERNMENTS AND BUSINESS CARE?

- To meet demands of **regulators**.
- To address **public concerns**.
- Minimize **unnecessary risks**.
- Avoid **costly mistakes**.
- Make **health** a part of everyday business.

AN EXAMPLE

Health Impact Assessment: Proposed Cleanup Plan for the Lower Duwamish Waterway Superfund Site



WILLIAM DANIELL, LINN GOULD, BJ CUMMINGS, JONATHAN CHILDERS, AMBER LENHART

HIA EXAMPLE: BACKGROUND



HIA EXAMPLE: SCREENING

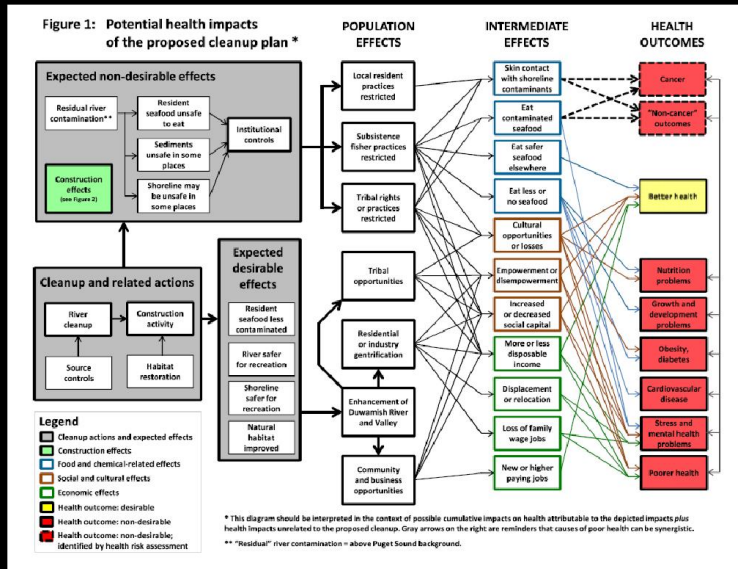


Opportunity to expand the
conversation
+
Public comment period
+
Health Impact Project funding
=
Health Impact Assessment

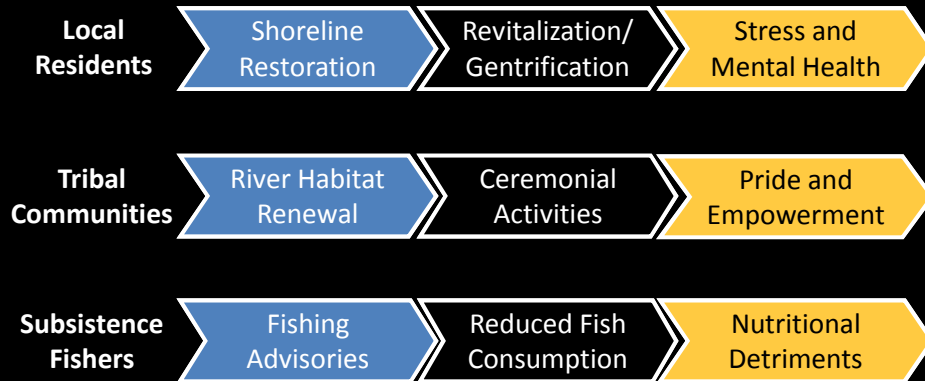
HIA EXAMPLE: SCOPING



HIA EXAMPLE: SCOPING



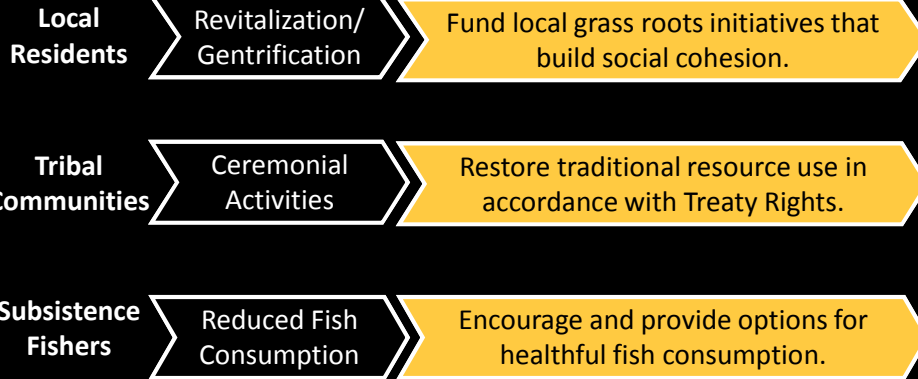
HIA EXAMPLE: SCOPING



HIA EXAMPLE: ASSESSMENT



HIA EXAMPLE: RECOMMENDATIONS



HIA EXAMPLE: OUTCOMES

Health Impact Assessment & Policy Recommendations (HIA)

The Duwamish River Cleanup Health Impact Assessment (HIA)

The HIA examines possible unintended health benefits and consequences of EPA's proposed cleanup plan, such as changes in diet and cultural practices resulting from contaminated fish or opportunities for local employment in cleanup-related jobs. The HIA makes recommendations for strategies to minimize health impacts, maximize benefits, and reduce inequities.

UPDATE: The City of Seattle has allocated \$250k from the Duwamish Opportunity Fund to implement recommendations identified from our original HIA report. In May 2014, we convened a community action team representing different stakeholders to make the most informed decision.

City of Seattle
Edward B. Murray, Mayor
Seattle Department of Neighborhoods
Bernie Agor Mataszo, Director

DUWAMISH RIVER OPPORTUNITY FUND (DROF)
Contact: Richard Conlin, 206.499.5793 or drof@seattle.gov

The City of Seattle is working to make the Superfund cleanup of the Duwamish River result in the optimum outcome for the Duwamish River and adjacent communities. Superfund cleanup and pollution source control are not enough to achieve the quality of life people desire. The City is committed to addressing community concerns about affordable housing, displacement, jobs, economic development and healthy food.

The City Council and Mayor directed City staff to assemble possible actions and to estimate funding needs to address the following objectives:

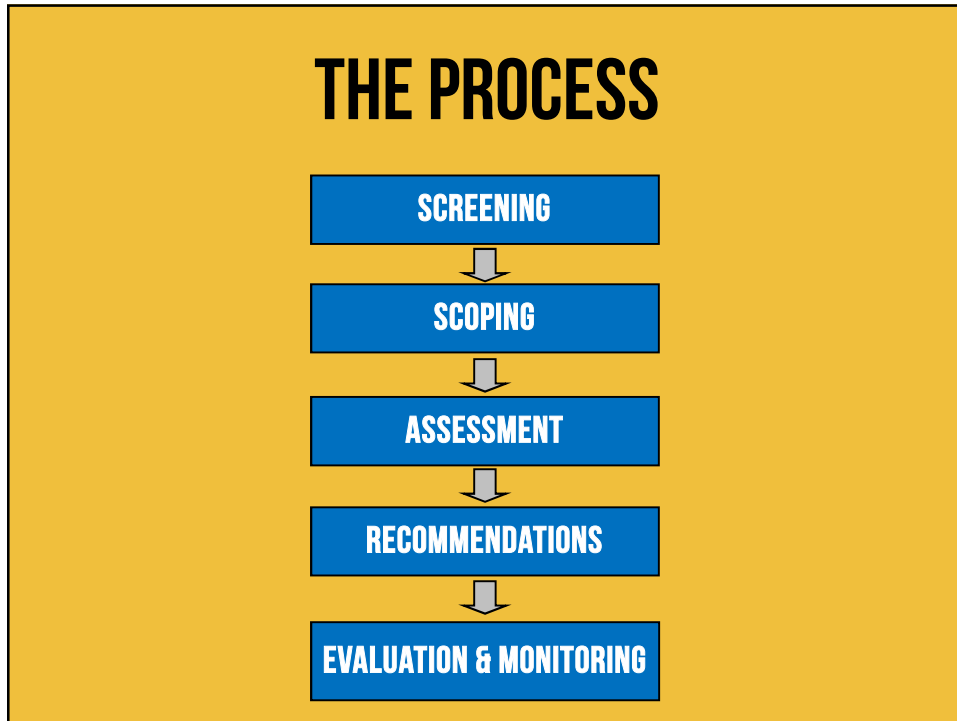
HIA EXAMPLE: OUTCOMES



3

HOW

is HIA done?



```
graph TD; A[SCREENING] --> B[SCOPING]; B --> C[ASSESSMENT]; C --> D[RECOMMENDATIONS]; D --> E[EVALUATION & MONITORING];
```

SCREENING

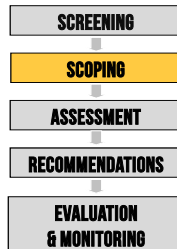
- To determine if HIA is required or useful

- Saves time, money and resources

- Not always done in practice

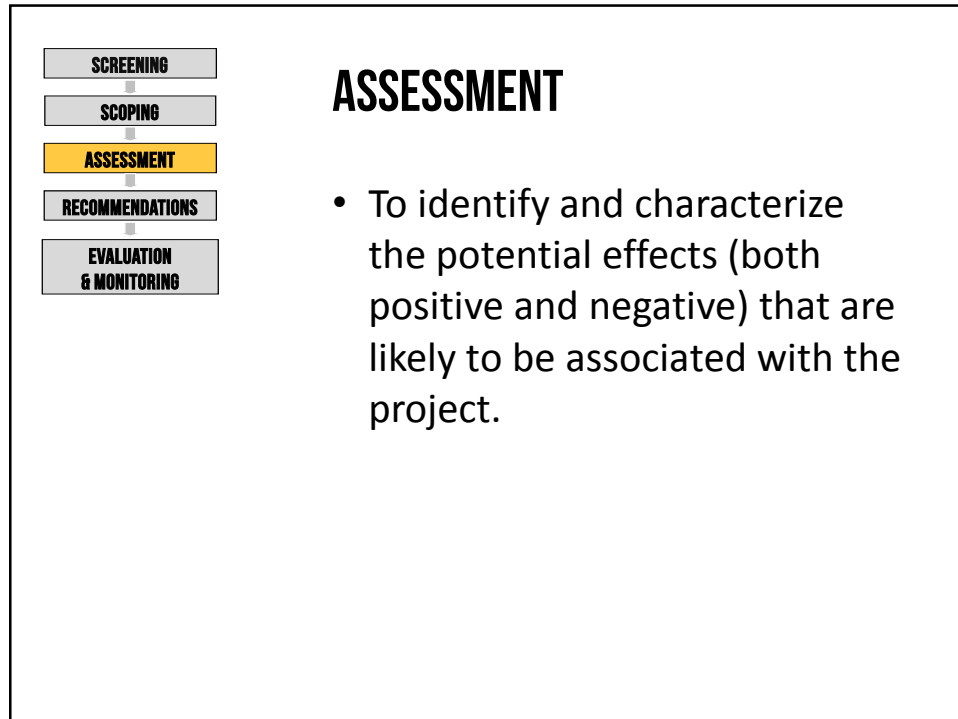
SCREENING CRITERIA

- Influence decision making
- Resources
- Health outcomes
- Differential impacts
- Additional value



SCOPING

- Develop a plan for the HIA approach
- Identify the health areas that will be examined



STEPS IN THE ASSESSMENT

1. Community profile
2. Gather evidence
3. Characterize impacts
4. Valuation of health impacts

SCREENING

↓

SCOPING

↓

ASSESSMENT

↓

RECOMMENDATIONS

↓

EVALUATION & MONITORING

RECOMMENDATIONS

- To develop strategies to enhance health benefits and mitigate harms

SCREENING

↓

SCOPING

↓

ASSESSMENT

↓

RECOMMENDATIONS

↓

EVALUATION & MONITORING

EVALUATION & MONITORING

- To measure the effectiveness of the HIA and its recommendations, and to track health changes over time

TYPES / LEVELS OF HIA



Rapid	Intermediate	Comprehensive
<ul style="list-style-type: none"> • Very quick (2 days to 6 weeks) • Low resources • No stakeholder involvement • No new data gathering 	<ul style="list-style-type: none"> • 4 weeks to several months • Moderate resources • Some stakeholder involvement • Some new data collected. Often relies on existing data banks. 	<ul style="list-style-type: none"> • Several months to several years • High resources • Significant stakeholder involvement • Usually involves collecting primary data.

TYPES / LEVELS OF HIA

- Standalone HIA
- Integrated assessment (IA) / Environmental, social & health impact assessment (ESHIA)

4

How does HIA
OPERATIONALIZE
health?



"Health is a state of complete physical, mental and social wellbeing and not merely the absence of disease or infirmity."

WHO Constitution, 1948

OPERATIONALIZING HEALTH IN HIA

HEALTH OUTCOMES

- Mortality
- Disease rates or numbers
- Injury rates or numbers
- Mental wellbeing

DETERMINANTS OF HEALTH

- Education
- Housing
- Environmental quality
- Income and income equality
- Personal behaviours (e.g. smoking)

CONSEQUENCES OF HEALTH CHANGES

- Quality of life
- Health service utilization
- Use of medication

**HEALTH EFFECTS:
BOTH POSITIVE
AND NEGATIVE**

COMMUNITY HEALTH BENEFITS: A FEW EXAMPLES



5

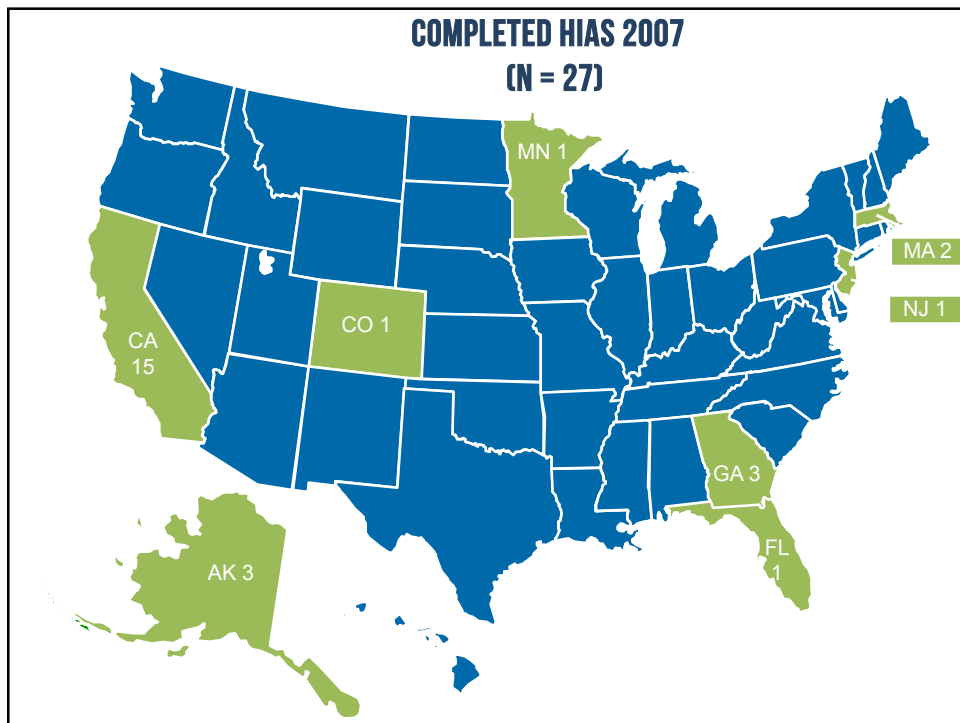
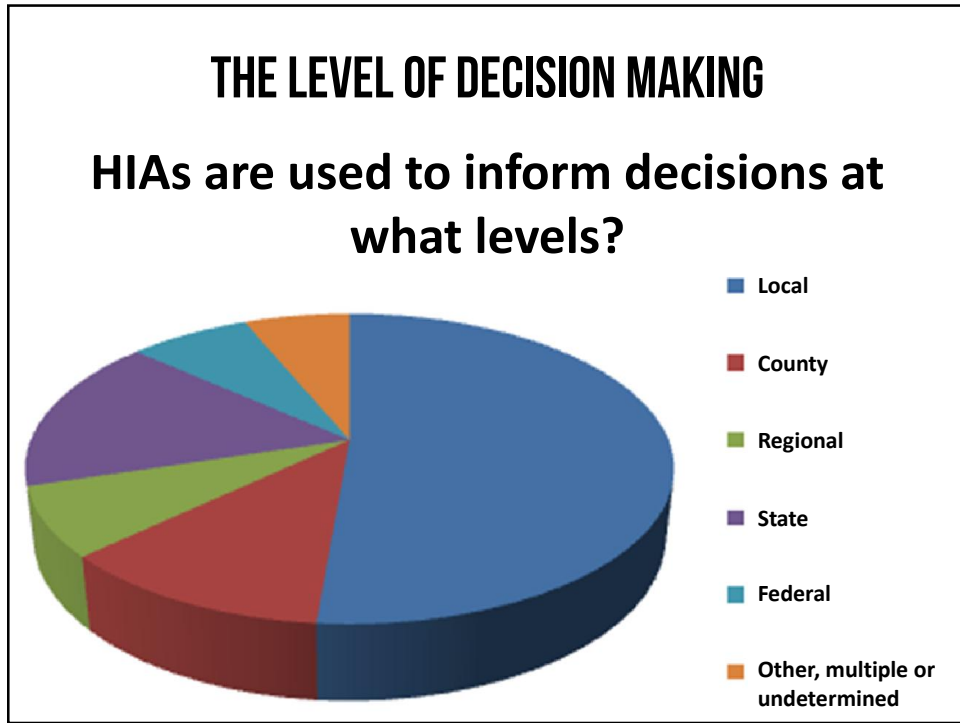
Current
STATE OF PRACTICE

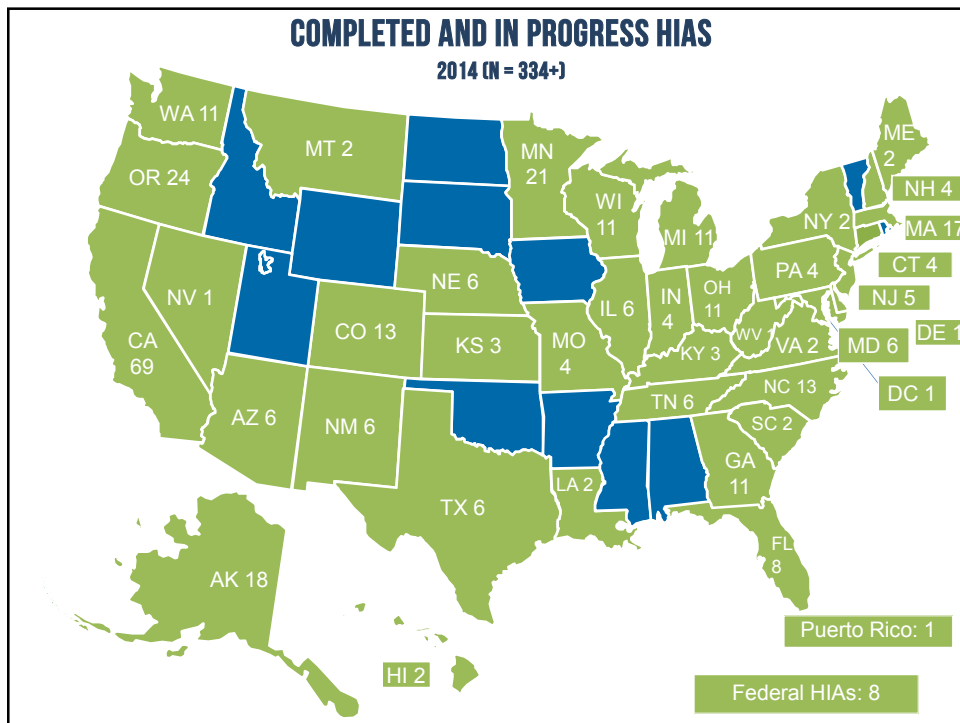
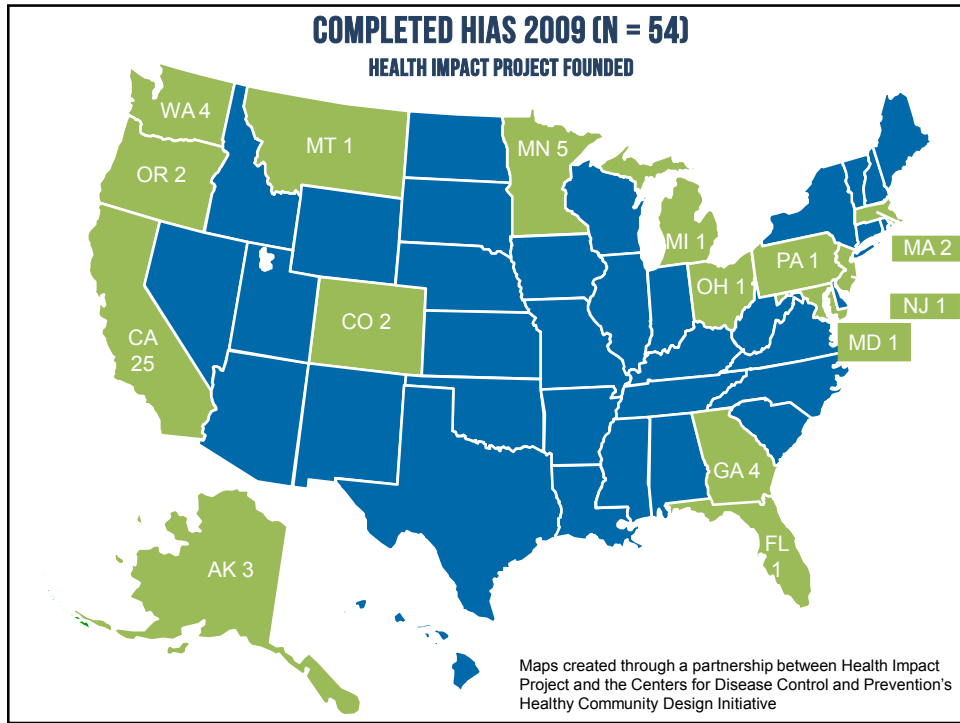
STATE OF PRACTICE

- 15+ years nationally & internationally
- Standards and best practices
- Several relevant professional associations: SOPHIA, IAIA
- Still working out the bugs and improving methods, evidence base

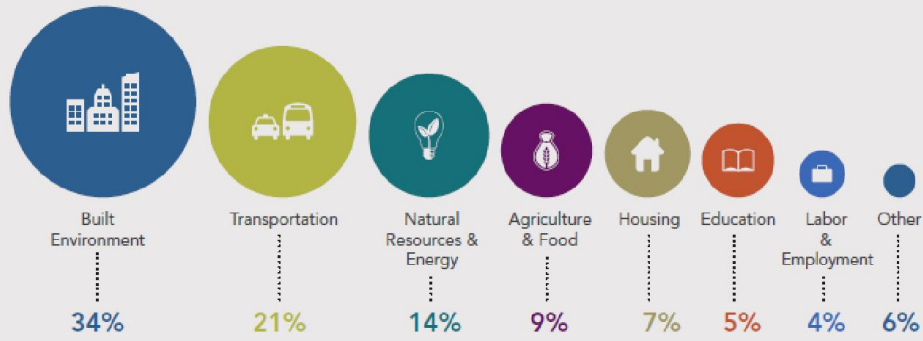
APPLICATION OF HIA

- Types of decision making
 - **Policy Decisions** (bills by state legislature, city council decision, local school board on district-wide policy)
 - **Policy Implementation** (weigh various implementation options for a policy once it is passed)
 - **Project Specific** (siting, permitting, construction, design)
 - **Comprehensive Plans** (neighborhood plan, regional growth plans, master planning documents)



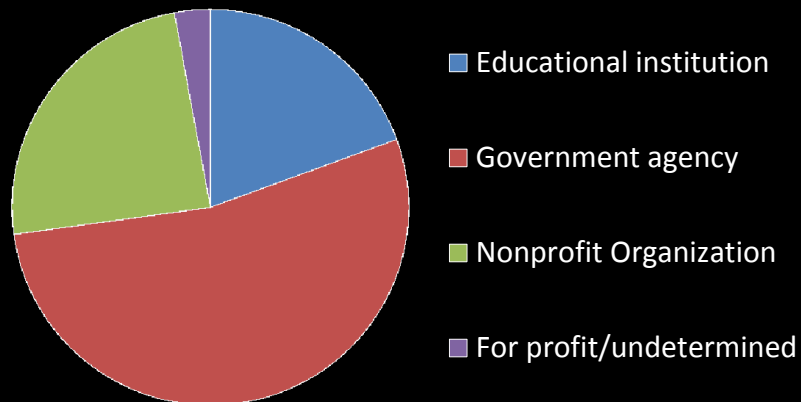


WHAT TOPICS HAVE BEEN ADDRESSED?



SOURCE: THE HEALTH IMPACT PROJECT

WHO DOES HIA?



6

what HIA
IS NOT

- **AN EPIDEMIOLOGIC STUDY**
- **AN ADVOCACY PIECE**
- **A HEALTH RISK ASSESSMENT**

HIA IS ONE TOOL IN THE TOOLBOX



6

The HIA REVIEW

HIA in a nutshell

- LOOKS AT UNINTENDED HEALTH EFFECTS
- PURPOSE IS TO INFORM DECISION-MAKING
- 5 STEPS
- SYSTEMATIC BUT FLEXIBLE

Questions?

HIA PROJECT CONTACT

- AMANDA CARRUTH, MPH
LOUISIANA PUBLIC HEALTH INSTITUTE (LPHI)
ACARRUTH@LPHI.ORG

HIA TRAINING CONTACTS

- MAX RICHARDSON, MCP | MPH
CALIFORNIA ENVIRONMENTAL HEALTH TRACKING PROGRAM
MAX.RICHARDSON@CDPH.CA.GOV
- AMBER LENHART, MPH
HEALTH IMPACT PROJECT
AMLENHART@PEWTRUSTS.ORG

Resources

WWW.HEALTHIMPACTPROJECT.ORG



RESEARCH & ANALYSIS

SHARE      FOLLOW 

HIA Research
Policy Briefs
Presentations & Reports
Guidance & Tools
Multimedia

RESEARCH & ANALYSIS

Recent Work

View All

Health Impact Assessment Legislation in the States

Issue Brief | Health Impact Project

Health care consumes a large percentage of state budgets, and legislators are looking for ways to reduce those costs and improve the public's health. [Read More >](#)

Health Impact Assessment of Proposed Changes to the Supplemental Nutrition Assistance Program

White Paper | Health Impact Project

To inform Congressional deliberations on this issue, the Health Impact Project, a

Health Impact Project Search

Search All Health Impact Project Resources



Event
2015 National Health Impact Assessment Meeting
[Register Now!](#)

Latest News from The Health Impact Project

New Program Grants Announced
Connecting Community Development