



Entergy Services, LLC  
639 Loyola Avenue (70113)  
P.O. Box 61000  
New Orleans, LA 70161-1000  
Tel 504 576 6571  
Fax 504 576 5579

Timothy S. Cragin  
Assistant General Counsel  
Legal Services - Regulatory

November 30, 2018

**By Hand Delivery**

Ms. Lora W. Johnson, CMC, LMMC  
Clerk of Council  
City Hall - Room 1E09  
1300 Perdido Street  
New Orleans, LA 70112


**Re: Resolution Directing Entergy New Orleans, Inc. to Investigate and Remediate Electric Service Disruptions and Complaints and to Establish Minimum Electric Reliability Performance Standards and Financial Penalty Mechanisms – CNO Docket No. UD-17-04**

Dear Ms. Johnson:

Please find enclosed for your further handling an original and three copies of Entergy New Orleans, LLC's ("ENO") 2018 Reliability Project Status Report as of October 31, 2018, which is submitted pursuant to Council Resolution R-18-98 and is being filed in the above-referenced docket. Please file an original and two copies into the record and return a date-stamped copy to our courier.

Thank you for your assistance with this matter.


Sincerely,

  
Timothy S. Cragin

TSC\rdm

Enclosures

cc: Official Service List (UD-17-04 via electronic mail)

**RECEIVED**  
NOV 30 2018  
BY: 

Nov 30 3 30

## **Entergy New Orleans, LLC's Reliability Project Progress Report as of October 31, 2018**

Entergy New Orleans, LLC (“ENO”) continues to implement its 2018 Revised Reliability Plan (the “Plan”) previously submitted to the Council of the City of New Orleans (“Council”) on July 5, 2018. Included in the attached report are details regarding the progress of each of the FOCUS and Backbone reliability projects identified in the Plan. Overall, as of October 31, 2018, ENO has completed 16 of the 32 planned projects with an additional ten currently in construction. Four pole-replacement projects are currently on hold due to the Army Corps of Engineers’ (the “Corps”) prohibition against performing work requiring excavation near the levees while the Mississippi River is above a certain level. That work is expected to resume when the Mississippi River level allows subject to Corps’ regulations. The remaining projects are expected to be started before the end of 2018 and, if not completed in 2018, will be carried over to completion at the start of 2019.

In addition to day-to-day reliability focus of the ENO crews and the primary reliability programs previously described in ENO filings, ENO has realigned personnel to establish a dedicated crew that could focus on immediate reliability concerns. The crew is composed of the reliability service men (“RSM”) previously assigned to the individual networks. In that capacity, their role was to identify emergent or high priority work that was expected to have an immediate impact on reliability. However, as individuals, the impact they could have was limited. By combining the RSMs into a dedicated crew covering all of ENO’s distribution system, they can now resolve emergent high priority issues identified by other crews from across the City and also perform proactive inspections (including the use of infrared equipment to identify “hot spots” that indicate potential imminent reliability vulnerabilities) and repairs, in addition to the already existing programs. ENO estimates that the work performed by this dedicated reliability crew has prevented potential outages that may have resulted in an estimated 80,000 customer interruptions.

ENO has also cross-referenced data from multiple reliability programs and identified 42 feeders that were not part of any other reliability program this year and is performing inspections on these feeders. All high priority issues are being added to the reliability crew workload.

Finally, in early September 2018, while ENO was staffed with additional crews poised for response in the event of a New Orleans impact from Tropical Storm Gordon that never occurred, ENO put those available workers into action performing infrastructure upgrades in the City. The work completed by these crews in a short time frame is estimated to have prevented outages that may have resulted in approximately 63,000 customer interruptions.

Based on data gathered through November 4, 2018, ENO has seen a slight overall reduction (approximately 4%) in customer interruptions compared to the same period in 2017. However, as noted in the Quanta Technology Report filed with the Council on October 31, 2018, some of the progress being made in reducing distribution line customer interruptions has been

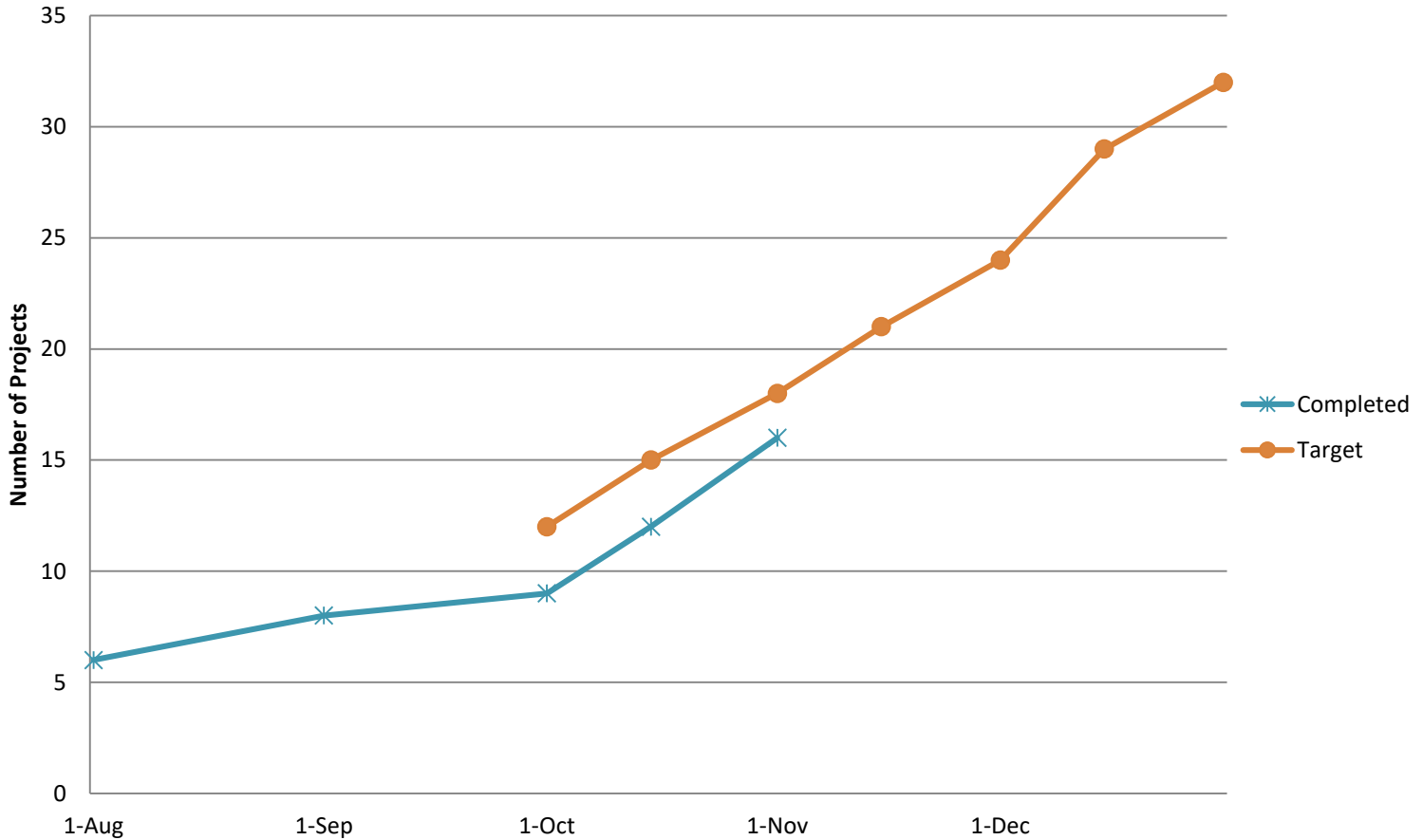
offset by challenges experienced in 2018 with transmission-related customer interruptions, including customer interruptions caused by substation issues. Transmission-related outages, though less common than distribution line outages, often affect a greater number of customer per outage. Through November 4, 2018, transmission-related customer interruptions increased by 91% as compared to the corresponding period in 2017, primarily as a result of a few outages that affected a large number of customers. ENO is in the process of reviewing the causes of these outages and developing a plan to improve transmission reliability going forward. From a strictly distribution line reliability view, ENO has seen an approximately 18% reduction in customer interruptions through November 4, 2018, as compared to the corresponding period in 2017. ENO is in the process of preparing its 2019 distribution reliability plan, including incorporating suggestions from the Quanta Report, with the intention of continuing to reduce customer interruptions going forward.

Overview of Status of 2018 Revised Reliability Plan FOCUS and Backbone Projects

ITEM	Network	Substation	Feeder #	Project Status	% Construction Completed	Adjusted Estimate	Actual Spent	Remaining Expected spend
FOCUS CARRYOVER	Orleans	Napoleon	1914	COMPL	100%	\$467,781.96	\$143,245.00	\$0.00
FOCUS CARRYOVER	Orleans	Napoleon	1916	COMPL	100%	\$621,299.14	\$639,365.00	\$0.00
FOCUS	Tulane	Almonaster	614	COMPL	100%	\$129,667.01	\$160,383.00	\$0.00
FOCUS	Tulane	Napoleon	1915	COMPL	100%	\$588,038.25	\$680,745.00	
FOCUS	Tulane	Napoleon	1914	CONST	85%	\$204,603.00	\$293,598.00	
FOCUS	Tulane	Joliet	2026	COMPL	100%	\$321,309.77	\$309,408.00	
FOCUS	Tulane	Pauger	1705	CONST	95%	\$111,284.86	\$47,265.00	\$64,019.86
FOCUS	NO East	Sherwood	1612	COMPL	100%	\$234,131.97	\$267,575.00	
FOCUS	Tulane	Joliet	2015	To be sched		\$193,852.73	\$0.00	
FOCUS	Tulane	Joliet	2016	COMPL	100%	\$167,717.56	\$70,811.00	\$0.00
FOCUS	Tulane	Pauger	1705	COMPL	100%	\$122,623.70	\$143,289.00	\$0.00
FOCUS	Tulane	Joliet	2013	COMPL	100%	\$169,516.20	\$128,971.00	\$40,545.20
FOCUS	NO East	Almonaster	623	COMPL	100%	\$37,783.13	\$14,786.00	\$22,997.13
FOCUS	Tulane	Market	2147	To be sched		\$132,034.77	\$0.00	
FOCUS	NO East	Almonaster	627	COMPL	100%	\$54,778.16	\$47,265.00	\$7,513.16
FOCUS	Tulane	Napoleon	1921	COMPL	100%	\$163,658.41	\$333,941.00	
FOCUS	NO East	Curran	2212	COMPL	100%	\$118,492.49	\$26,254.00	\$92,238.49
FOCUS	Tulane	Pontchartrain	512	CONST	50%	\$68,419.82	\$11,795.00	\$56,624.82
FOCUS	Tulane	Napoleon	1915	To be sched		\$618,278.04	\$53,961.00	
FOCUS	Tulane	Almonaster	615	CONST	15%	\$278,986.41	\$11,638.00	
FOCUS	Tulane	Joliet	2026	CONST	0%	\$67,936.76	\$8,260.00	\$59,676.76
FOCUS	Tulane	Napoleon	1914	CONST	75%	\$303,690.15	\$234,361.00	
FOCUS	Tulane	Napoleon	1916	CONST	30%	\$232,795.12	\$29,443.00	
BACKBONE	Tulane	Market	2132	CONST	45%	\$1,258,555.99	\$307,382.00	
BACKBONE	Tulane	Joliet	2016	CONST	5%	\$391,728.00	\$22,238.00	
BACKBONE	NO East	Sherwood	1610	COMPL	100%	\$242,364.46	\$339,242.00	
BACKBONE	Tulane	Napoleon	1912	To be sched		\$582,769.26	\$0.00	
BACKBONE	Tulane	Avenue C	408	COMPL	100%	\$135,471.36	\$111,841.00	\$23,630.35
BACKBONE	Tulane	Market	2146	CONST	0%	\$1,175,801.08	\$36,318.00	
BACKBONE	Tulane	Joliet	2013	To be sched		\$439,345.84	\$0.00	
BACKBONE	Tulane	Napoleon	1913	To be sched		\$680,690.64	\$34,541.00	
BACKBONE	NO East	Sherwood	1604	COMPL	100%	\$105,988.53	\$19,161.00	\$86,827.53

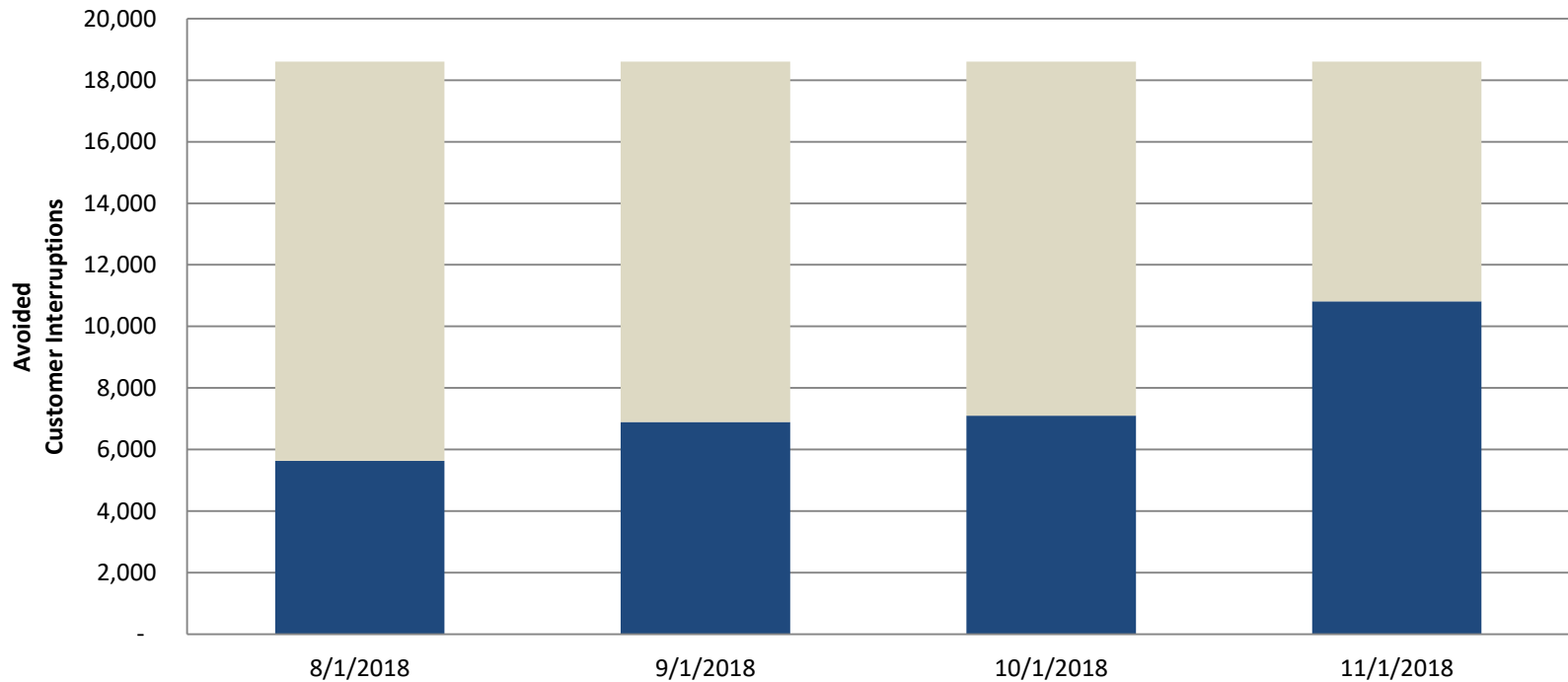
# Overall Progress to Target EOY

## 2018 Focus/Backbone Progress



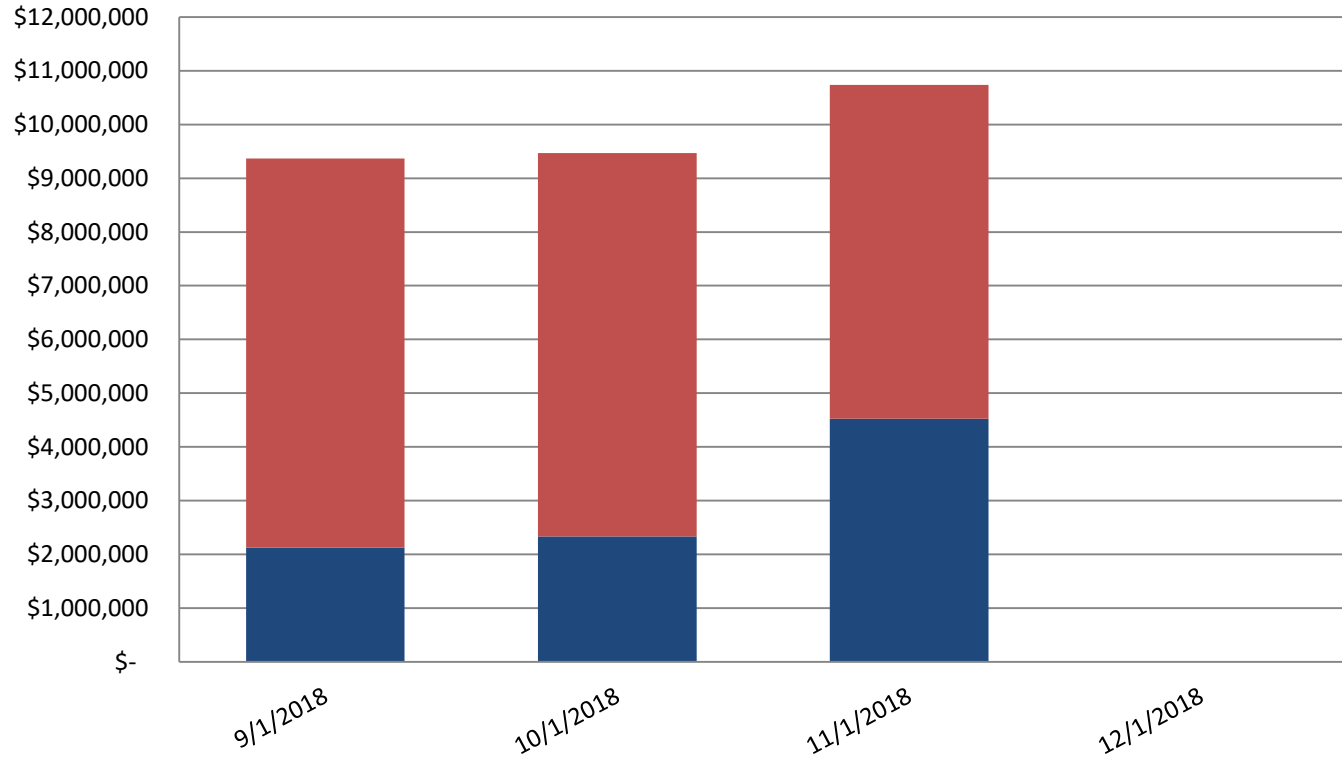
# Progression of Projects

## Project Impact on Customer Interruptions



	8/1/2018	9/1/2018	10/1/2018	11/1/2018
■ Incomplete	12,974	11,708	11,503	7,789
■ Completed	5,629	6,895	7,100	10,814

# Reliability Project Spend



	9/1/2018	10/1/2018	11/1/2018	12/1/2018
Remaining Estimated Spend	\$7,244,328	\$7,132,596	\$6,206,904	
Spent to Date	\$2,125,229	\$2,334,450	\$4,527,082	

# Backbone

## Market Feeder 2132 SBKR 2132

District B  
1,548 customer interruptions

### Project Description

Based on cyclical inspections performed as part of on-going reliability maintenance program, the section of Market Feeder 2132 to the first protective device will be intensively worked with an expected annual reduction of 1,548 customer interruptions. This work will include replacing 51 poles, 550 crossarms, 978 crossarm braces, 7 guy strains, 6 lightning arrestors, relocating 14 fuse switches, installing 134 Hendrix grounds, 36 animal guards, and repairing damage to 60 disconnect switches.

Work will occur in the area from Simon Bolivar at Felicity to Tchoupitoulas at First St.

### Commentary

- Two WRs complete
- Three WRs started
- 1 WR awaiting crew availability

**Project Status: CONSTRUCTION**

### Issues/Risks

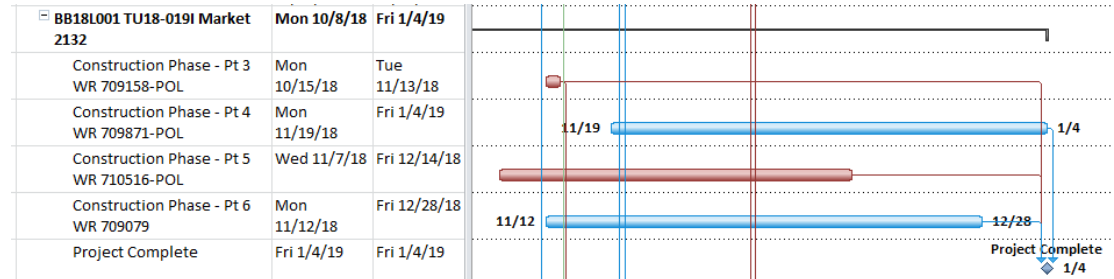
N/A

### Changes

N/A

### Cost

	Budgeted	Current Spend
Cost	\$1,258,556	\$307,382
Man-hours	6,926	





# Backbone

## Joliet Feeder 2016 SBKR 2016

District A  
742 customer interruptions

### Project Description

Based on cyclical inspections performed as part of on-going reliability maintenance program, the section Joliet Feeder 2016 to the first protective device will be intensively worked with an expected annual reduction of 742 customer interruptions. This work will include replacing 40 poles, 201 crossarms, 340 crossarm braces, 45 guy strains, 1 lightning arrester, relocating 45 fuse switches, removing 1 ground, adding 68 Hendrix grounds, and 24 disconnect switches.

Work will occur in area from Forshey St. and Mistletoe St. to S. Claiborne to S. Carrolton.

### Commentary

- 2 WRs in construction
- 1 WR awaiting crew availability

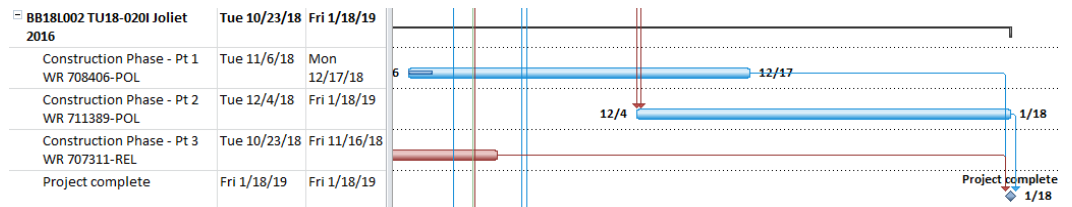
**Project Status: CONSTRUCTION**

### Issues/Risks

N/A

### Changes

N/A



### Cost

	Budgeted	Current Spend
Cost	\$391,728	\$ 22,238
Man-hours	4,088	

# Backbone

## Sherwood Forest Feeder 1610 SBKR 1610

District B  
738 customer interruptions

### Project Description

Based on cyclical inspections performed as part of on-going reliability maintenance program, the section of Sherwood Forest Feeder 1610 to the first protective device will be intensively worked with an expected annual reduction of 738 customer interruptions. This work will include replacing 22 poles, 109 crossarms, 5 guy strains, 5 lightning arrestors, relocating 29 fuse switches, adding 45 Hendrix grounds, repairing damage on 9 disconnect switches, and addressing 3 vegetation issues.

Work will occur in the area from Morrison at Dwyer and Downman at Crowder.

### Commentary

- Construction complete 6/8/18.

Project Status: **COMPLETE**

### Issues/Risks

N/A

### Changes

N/A

### Cost

	Budgeted	Current Spend
Cost	\$242,364	\$339,242
Man-hours	1,876	

# Backbone

## Napoleon Feeder 1912 SBKR 1912

District B  
717 Customer interruptions

### Project Description

Based on cyclical inspections performed as part of on-going reliability maintenance program, the section Joliet Feeder 2016 to the first protective device will be intensively worked with an expected annual reduction of 742 customer interruptions. This work will include replacing 26 poles, 368 crossarms, 12 guy strains, 20 lightning arresters, 46 fuse switches, and adding 89 Hendrix grounds, 81 animal guards, and 39 disconnect switches.

Work will occur in area on Tchoupitoulas from State to Gravier St.

### Commentary

- 4 WRs awaiting crew availability

**Project Status:** **Construction Queue**

### Issues/Risks

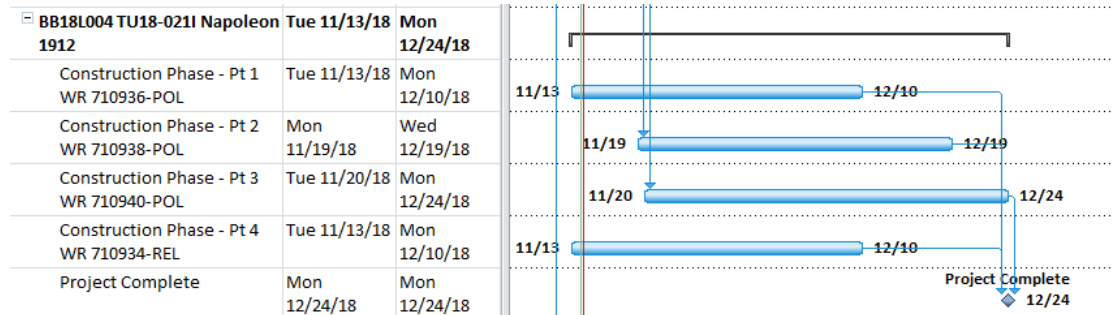
N/A

### Changes

N/A

### Cost

	Budgeted	Current Spend
Cost	\$ 582,769	\$ --
Man-hours	4,400	



# Backbone

## Avenue C Feeder 408 SBKR 408

District A  
687 Customer interruptions

### Project Description

Based on cyclical inspections performed as part of on-going reliability maintenance program, the section Avenue C Feeder 408 to the first protective device will be intensively worked with an expected annual reduction of 687 customer interruptions. This work will include replacing 7 poles, 83 crossarms, 157 crossarm braces, 8 guy strains, 4 lightning arrestors, relocating 17 fuse switches, adding 26 Hendrix grounds, 15 poles grounds, repairing 3 damaged disconnect switches, and addressing vegetation issues.

Work will occur in area from Harrison at Orleans Ave. to 17<sup>th</sup> Street canal at Filmore.

### Commentary

- Construction complete 10/8/18

**Project Status: COMPLETE**

### Issues/Risks

N/A

### Changes

N/A

### Cost

	Budgeted	Current Spend
Cost	\$135,471	\$111,841
Man-hours	1,081	

# Backbone

## Market Feeder 2146 SBKR 2146

District B  
615 Customer interruptions

### Project Description

Based on cyclical inspections performed as part of on-going reliability maintenance program, the section Market Feeder 2146 to the first protective device will be intensively worked with an expected annual reduction of 615 customer interruptions. This work will include replacing 49 poles, 83 crossarms, 553 crossarm braces, 23 fiberglass arms, 12 guy strains, relocating 24 fuse switches, installing 91 Hendrix grounds, 93 animal guards, repairing 45 damaged disconnect switches, and addressing 22 vegetation issues.

Work will occur in the triangle from Washington Ave. and St. Thomas to Carondelet.

### Commentary

- 4 WRs in construction
- 2 WRs awaiting crew availability

**Project Status: CONSTRUCTION**

### Issues/Risks

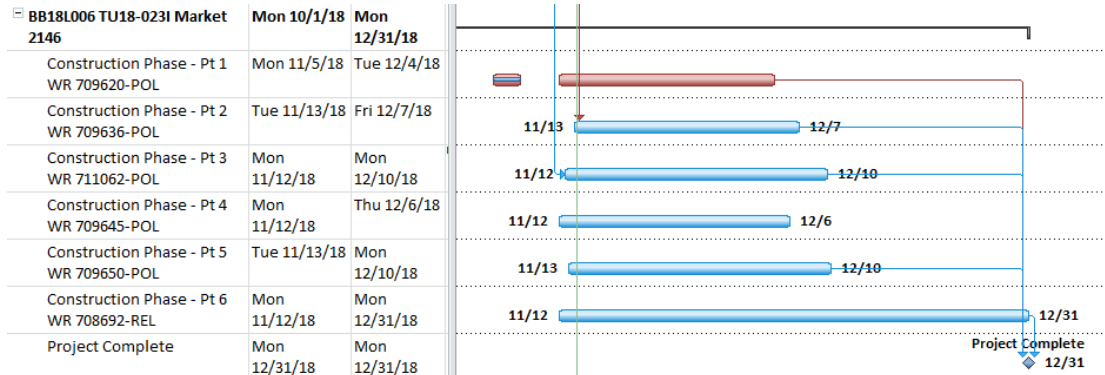
Weather delays impacting start of some WR's

### Changes

N/A

### Cost

	Budgeted	Current Spend
Cost	\$1,175,801	\$ 36,318
Man-hours	9,407	



# Backbone

## Joliet Feeder 2013 SBKR 2013

District A  
588 Customer interruptions

### Project Description

Based on cyclical inspections performed as part of on-going reliability maintenance program, the section Joliet Feeder 2013 to the first protective device will be intensively worked with an expected annual reduction of 588 customer interruptions. This work will include replacing 17 poles, 410 crossarms, 29 guy strains, relocating 17 fuse switches, installing 85 Hendrix grounds, 85 animal guards, 3 AAAC Sleeves, and 39 switch disconnects.

Work will occur in the area from S. Claiborne and Adams St. to Hickory and Adams to Willow and Pine.

### Commentary

- 2 WRs awaiting crew availability

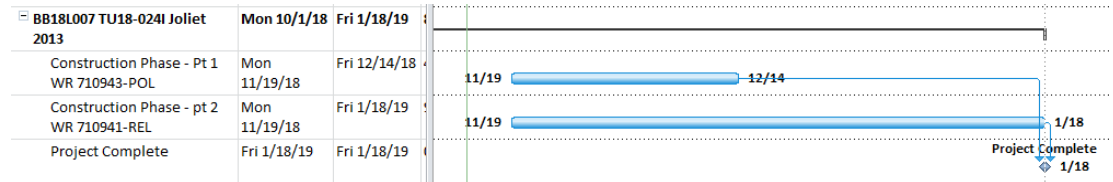
**Project Status: Construction Queue**

### Issues/Risks

N/A

### Changes

N/A



### Cost

	Budgeted	Current Spend
Cost	\$ 439,346	\$ --
Man-hours	3,530	

# Backbone

## Napoleon Feeder 1913 SBKR 1913

District B  
573 Customer interruptions

### Project Description

Based on cyclical inspections performed as part of on-going reliability maintenance program, the section Napoleon Feeder 1913 to the first protective device will be intensively worked with an expected annual reduction of 573 customer interruptions. This work will include replacing 12 poles, 87 crossarms, relocating 28 fuse switches, installing 70 Hendrix ground, 70 Animal guards, 1 shield, and repairing 15 damaged disconnect switches.

Work will occur in the area from Cadiz and Danneel to S. Front St. to Jefferson Ave.

### Commentary

- 1 WR in construction
- 1 WR awaiting crew availability

**Project Status: Construction Queue**

### Issues/Risks

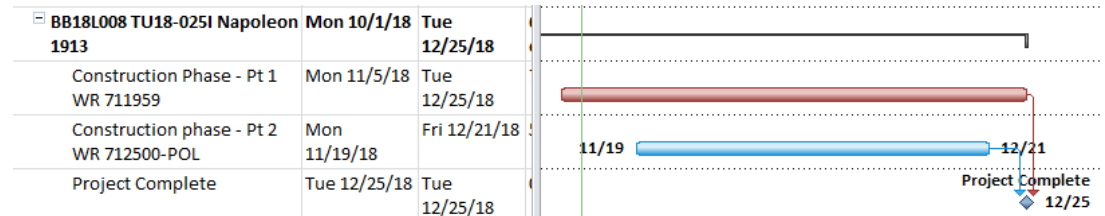
Weather delays impacting start of WR

### Changes

N/A

### Cost

	Budgeted	Current Spend
Cost	\$680,691	\$ 34,541
Man-hours	5,466	



# Backbone

District E

502 Customer interruptions

## Sherwood Forest Feeder 1604 SBKR 1604

### Project Description

Based on cyclical inspections performed as part of on-going reliability maintenance program, the section of Sherwood Forest Feeder 1604 to the first protective device will be intensively worked with an expected annual reduction of 502 customer interruptions. This work will include replacing 2 poles, 50 crossarms, 94 crossarm braces, 7 guy strains, 12 lightning arresters, relocation 16 fuse switches, installing 26 Hendrix ground, and 78 animal guards.

Work will occur in the area from Dwyer Rd. and Bundy Rd. to Read and Grant St.

### Commentary

- Construction complete 11/6/18.

**Project Status: COMPLETE**

### Issues/Risks

N/A

### Changes

N/A

### Cost

	Budgeted	Current Spend
Cost	\$105,989	\$19,161
Man-hours	773	



# Focus

## Napoleon Feeder 1914 SBKR 1914

District B  
1,592 Customer interruptions

### Project Description

Based on outage trends, SBKR 1914 on the Napoleon Feeder 1914 was identified as having multiple repeat outages. Based on this trend, an inspection was performed on the line sections behind the device and all degraded equipment identified. The work is expected to result in an annual reduction of 1,592 customer interruptions. This work will include replacing 11 poles, 64 crossarms, 17 guy strains, 7 lightning arresters, installing 70 Hendrix grounds, 13 pole grounds, 83 animal guards, 12 disconnect switches, addressing 7 vegetation issues, and relocating 42 fuse switches.

Work will occur in the area from Bordeaux at S. Saratoga to Napoleon at Carondelet.

### Commentary

- Construction complete 2/14/18.

**Project Status: Complete**

### Issues/Risks

N/A

### Changes

N/A

### Cost

	Budgeted	Current Spend
Cost	\$256,410	\$143,245
Man-hours	2,757	

# Focus

District D  
666 Customer interruptions

## Almonaster Feeder 614 LFUS 27700

### Project Description

Based on outage trends, LFUS 27700 on the Almonaster Feeder 614 was identified as having multiple repeat outages. Based on this trend, an inspection was performed on the line sections behind the device and all degraded equipment identified. The work is expected to result in an annual reduction of 666 customer interruptions. This work will include replacing 2 poles, 64 crossarms, 18 lightning arrestors, 46 grounds, adding 43 animal guards and relocating 20 fuse switches.

Work will occur in the triangle between N. Rampart/St. Claude, Esplanade Ave and Frenchman St.

### Commentary

- Construction complete 6/25/18.

**Project Status: Complete**

### Issues/Risks

N/A

### Changes

N/A

### Cost

	Budgeted	Current Spend
Cost	\$129,667	\$160,383
Man-hours	1,000	

# Focus

## Napoleon Feeder 1915 SBKR 1915

District B  
1,647 Customer interruptions

### Project Description

Based on outage trends, SBKR 1915 on the Napoleon Feeder 1915 was identified as having multiple repeat outages. Based on this trend, an inspection was performed on the line sections behind the device and all degraded equipment identified. The work is expected to result in an annual reduction of 1,647 customer interruptions. This work will include replacing 8 poles, 341 crossarms, 6 crossarm braces, 51 guy strain insulators, 33 lightning arresters, installing 72 grounds, 182 animal guards, and relocating 43 fuse switches.

Work will occur in the triangle between S. Claiborne at Thalia St., Napoleon Ave. and Baronne St.

### Commentary

- Construction complete 10/26/18

Project Status: **COMPLETE**

### Issues/Risks

N/A

### Changes

N/A

### Cost

	Budgeted	Current Spend
Cost	\$588,038	\$680,745
Man-hours	4,467	

# Focus

District B

1,091 Customer interruptions

## Napoleon Feeder 1914 RCLR 25172

### Project Description

Based on outage trends, RCLR 25172 on the Napoleon Feeder 1914 was identified as having multiple repeat outages. Based on this trend, an inspection was performed on the line sections behind the device and all degraded equipment identified. The work is expected to result in an annual reduction of 1,091 customer interruptions. This work will include replacing 84 crossarms, 16 guy strain insulators, relocating 12 fuse switches, installing 20 Hendrix grounds, 4 lightning arrestors, and trimming trees at multiple locations.

Work will occur in the triangle between S. Claiborne at Thalia St., Napoleon Ave. and Baronne St.

### Commentary

- Construction 85% complete.

Project Status: **CONSTRUCTION**

### Issues/Risks

N/A

### Changes

N/A

### Cost

	Budgeted	Current Spend
Cost	\$204,603	\$ 293,598
Man-hours	1,580	

# Focus

## Joliet Feeder 2026 LFUS 52975

District A  
416 Customer interruptions

**Project Description**

Based on outage trends, RCLR 52975 on the Joliet Feeder 2026 was identified as having multiple repeat outages. Based on this trend, an inspection was performed on the line sections behind the device and all degraded equipment identified. The work is expected to result in an annual reduction of 416 customer interruptions. This work will include replacing 17 poles, 160 crossarms, 3 standoffs, 24 guy strain insulators, 28 lightning arresters, 29 fuse switches, installing 47 grounds, and 29 animal guards.

Work will occur in the triangle from I-10 at Hollygrove St., to Oak St., to S. Carrolton Ave.

**Commentary**

- Work completed 5/25/18

**Project Status: COMPLETE**

**Issues/Risks**

N/A

**Changes**

N/A

**Cost**

	Budgeted	Current Spend
Cost	\$321,310	\$309,408
Man-hours	2,601	

# Focus

District B  
305 Customer interruptions

## Pauger Feeder 1705 LFUS 27854

### Project Description

Based on outage trends, RCLR 27854 on the Pauger Feeder 1705 was identified as having multiple repeat outages. Based on this trend, an inspection was performed on the line sections behind the device and all degraded equipment identified. The work is expected to result in an annual reduction of 416 customer interruptions. This work will include replacing 2 poles, 76 crossarms, 2 guy strains, 17 lightning arresters, and 19 grounds. Work will occur in the area between Esplanade Ave at Bayou St. John to N. Broad St. and The Fair Grounds to Orleans Ave.

### Commentary

- Construction 95% complete.

**Project Status: Construction**

### Issues/Risks

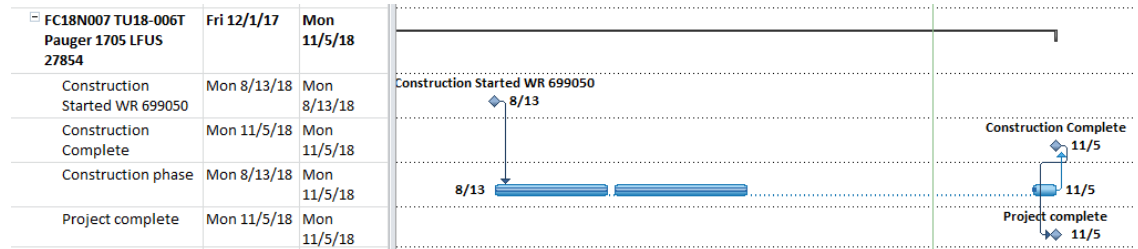
Stopped for safety concern. And outage is now required and setup for November to complete.

### Changes

N/A

### Cost

	Budgeted	Current Spend
Cost	\$111,285	\$47,265
Man-hours	849	



# Focus

District E  
1,000 Customer interruptions

## Sherwood Forest Feeder 1612 SBKR 1612

### Project Description

Based on outage trends, SBKR 1612 on the Sherwood Forest Feeder 1612 was identified as having multiple repeat outages. Based on this trend, an inspection was performed on the line sections behind the device and all degraded equipment identified. The work is expected to result in an annual reduction of 1,000 customer interruptions. This work will include replacing 12 poles, 91 crossarms, 9 guy strains, 9 lightning arrestors, 29 grounds, 19 fuse switches and 9 damaged disconnect switches.

Work will occur in the area between Dwyer Road, Old Gentilly Road, Read Blvd and Wright Road.

### Commentary

- Construction complete 8/21/18

Project Status: **COMPLETE**

### Issues/Risks

N/A

### Changes

N/A

### Cost

	Budgeted	Current Spend
Cost	\$234,132	\$267,575
Man-hours	1,796	

# Focus

## Joliet Feeder 2015 LFUS 93123

District A  
282 Customer interruptions

### Project Description

Based on outage trends, LFUS 93123 on the Joliet Feeder 2015 was identified as having multiple repeat outages. Based on this trend, an inspection was performed on the line sections behind the device and all degraded equipment identified. The work is expected to result in an annual reduction of 282 customer interruptions. This work will include replacing 13 poles, 117 crossarms, 21 guy strains, 7 lightning arrestors, relocating 26 fuse switches, installing 30 Hendrix ground, 29 pole grounds, and 48 animal guards.

Work will occur in the area between Green St. and S. Carrolton, to the intersection of Hillary and Cohn St.

### Commentary

- Note: This device replaced LFUS 27723 in the original plan
- Awaiting construction crew availability

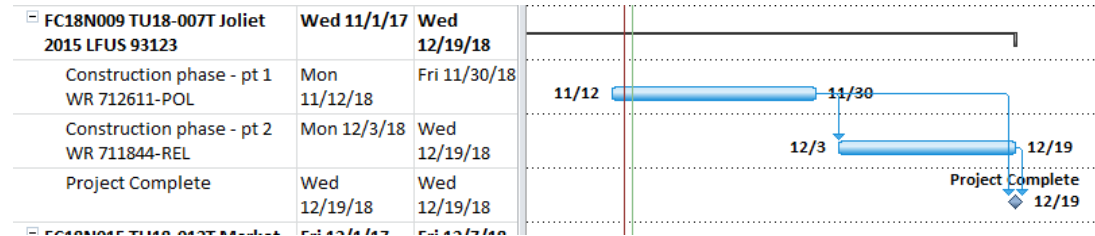
**Project Status:** Construction Queue

### Issues/Risks

N/A

### Changes

N/A



### Cost

	Budgeted	Current Spend
Cost	\$193,853	\$ --
Man-hours	1,540	



# Focus

## Joliet Feeder 2016 LFUS 27704

District A  
269 Customer interruptions

### Project Description

Based on outage trends, LFUS 27704 on the Joliet Feeder 2016 was identified as having multiple repeat outages. Based on this trend, an inspection was performed on the line sections behind the device and all degraded equipment identified. The work is expected to result in an annual reduction of 269 customer interruptions. This work will include replacing 5 poles, 87 crossarms, 7 guy strains, 13 lightning arrestors, 25 grounds, 22 animal guards, and relocating 14 fuse switches.

Work will occur in the area from Broadway St. to Audubon St., S. Claiborne Ave. to Willow St.

### Commentary

- Work complete 5/11/18

Project Status: **COMPLETE**

### Issues/Risks

N/A

### Changes

N/A

### Cost

	Budgeted	Current Spend
Cost	\$167,718	\$70,811
Man-hours	1,356	

# Focus

## Pauger Feeder 1705 LFUS 21256

District D  
266 Customer interruptions

### Project Description

Based on outage trends, LFUS 21256 on the Pauger Feeder 1705 was identified as having multiple repeat outages. Based on this trend, an inspection was performed on the line sections behind the device and all degraded equipment identified. The work is expected to result in an annual reduction of 266 customer interruptions. This work will include replacing 11 poles, 66 crossarms, 130 crossarm braces, 9 lightning arrestors, 9 guy strains, 26 grounds, 43 animal guards and relocating 23 fuse switches.

Work will occur in the triangle between Gentilly Blvd. and Elysian Fields Ave. to Mirabeau

### Commentary

- Work complete 5/25/18

Project Status: **COMPLETE**

### Issues/Risks

N/A

### Changes

N/A

### Cost

	Budgeted	Current Spend
Cost	\$122,624	\$143,289
Man-hours	1,005	

# Focus

## Joliet Feeder 2013 LFUS 62084

District A  
255 Customer interruptions

### Project Description

Based on outage trends, LFUS 62084 on the Joliet Feeder 2013 was identified as having multiple repeat outages. Based on this trend, an inspection was performed on the line sections behind the device and all degraded equipment identified. The work is expected to result in an annual reduction of 255 customer interruptions. This work will include replacing 3 poles, 42 crossarms, 72 crossarm braces, 5 guy strains, relocating 4 fuse switches, installing 8 Hendrix grounds, 9 pole grounds, and 9 animal guards.

Work will occur in the area from Cambrone and Green to Dante to Hickory.

### Commentary

- Construction complete 10/16/18.

Project Status: **COMPLETE**

### Issues/Risks

N/A

### Changes

N/A

### Cost

	Budgeted	Current Spend
Cost	\$169,516	\$128,971
Man-hours	1,461	

# Focus

## Almonaster Feeder 623 LFUS 21162

District D  
248 Customer interruptions

### Project Description

Based on outage trends, LFUS 21162 on the Almonaster Feeder 623 was identified as having multiple repeat outages. Based on this trend, an inspection was performed on the line sections behind the device and all degraded equipment identified. The work is expected to result in an annual reduction of 248 customer interruptions. This work will include replacing 2 poles, 64 crossarms, 18 lightning arrestors, installing 46 grounds, 43 animal guards and relocating 20 fuse switches.

Work will occur in the area from St. Claude to N. Peters, Spain St. to Press St.

### Commentary

- Construction complete 9/12/18.

Project Status: **COMPLETE**

### Issues/Risks

N/A

### Changes

N/A

### Cost

	Budgeted	Current Spend
Cost	\$37,783	\$14,786
Man-hours	288	

# Focus

## Market Feeder 2147 LFUS 27799

District B  
175 Customer interruptions

### Project Description

Based on outage trends, LFUS 27799 on the Market Feeder 2147 was identified as having multiple repeat outages. Based on this trend, an inspection was performed on the line sections behind the device and all degraded equipment identified. The work is expected to result in an annual reduction of 175 customer interruptions. This work will include replacing 6 poles, 66 crossarms, 114 crossarm braces, 8 guy strains, 21 lightning arresters, relocate 24 fuse switches, install 22 Hendrix ground , repair 16 damaged pole grounds, install 73 animal guards, and address 16 vegetation issues .

Work will occur in the area from Sixth and Chestnut, to Prytania and Seventh St.

### Commentary

- 2 WRs awaiting crew availability

**Project Status: Construction Queue**

### Issues/Risks

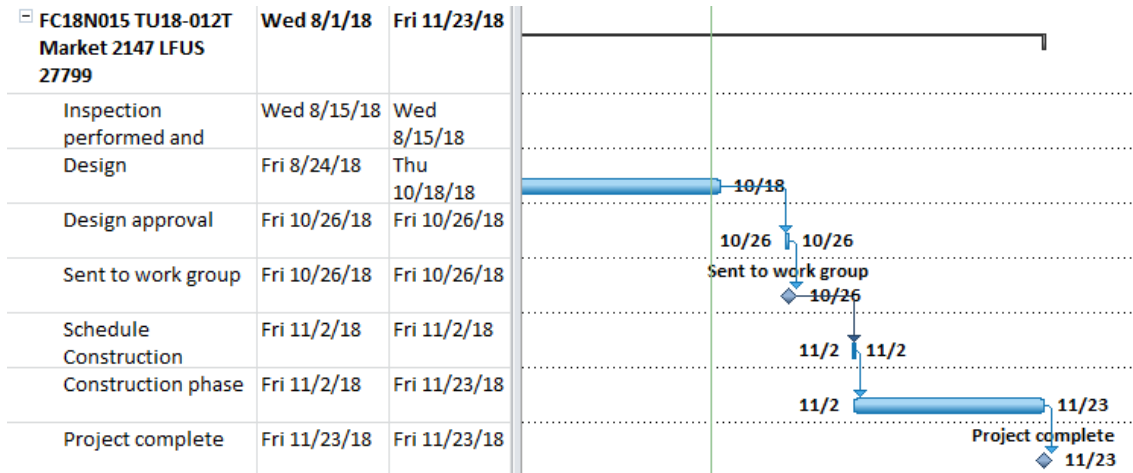
N/A

### Changes

N/A

### Cost

	Budgeted	Current Spend
Cost	\$132,035	\$ --
Man-hours	1,383	



# Focus

## Almonaster Feeder 627 LFUS 86712

District D  
206 Customer interruptions

### Project Description

Based on outage trends, LFUS 86712 on the Almonaster Feeder 627 was identified as having multiple repeat outages. Based on this trend, an inspection was performed on the line sections behind the device and all degraded equipment identified. The work is expected to result in an annual reduction of 206 customer interruptions. This work will include replacing 2 poles, 26 crossarms, 52 crossarm braces, 1 guy strain, 7 lightning arresters, 12 fuse switches, 9 grounds, and 3 pole grounds.

Work will occur in the triangle between St. Bernard Ave. and N. Galvez to Allen St. to I-10.

### Commentary

- Construction complete 9/17/18

Project Status: **COMPLETE**

### Issues/Risks

N/A

### Changes

N/A

### Cost

	Budgeted	Current Spend
Cost	\$54,778	\$47,265
Man-hours	444	

# Focus

## Napoleon Feeder 1921 LFUS 21437

District B  
199 Customer interruptions

### Project Description

Based on outage trends, LFUS 21437 on the Napoleon Feeder 1921 was identified as having multiple repeat outages. Based on this trend, an inspection was performed on the line sections behind the device and all degraded equipment identified. The work is expected to result in an annual reduction of 199 customer interruptions. This work will include replacing 3 poles, 60 crossarms, 120 crossarm braces, 7 guy strains, 14 fuse switches, 20 Hendrix grounds, and 20 animal guards.

Work will occur in the area from Dufossat and Pitt St. to Coliseum and Bellecastle St.

### Commentary

- Construction complete 10/25/18.

Project Status: **COMPLETE**

### Issues/Risks

N/A

### Changes

N/A

### Cost

	Budgeted	Current Spend
Cost	\$163,658	\$ 333,941
Man-hours	1,400	

# Focus

## Curran Feeder 2212 LFUS 27648

District E  
175 Customer interruptions

### Project Description

Based on outage trends, LFUS 27648 on the Curran Feeder 2212 was identified as having multiple repeat outages. Based on this trend, an inspection was performed on the line sections behind the device and all degraded equipment identified. The work is expected to result in an annual reduction of 175 customer interruptions. This work will include replacing 7 poles, 11 crossarms, 1 lightning arrester, 9 grounds, 6 pole grounds, 5 animal guards and relocating 2 fuse switches.

Work will occur in the area from Hayne Blvd. to Curran Blvd., Edgelake Ct. to Crowder Blvd.

### Commentary

- Construction complete 10/23/18

Project Status: **COMPLETE**

### Issues/Risks

N/A

### Changes

N/A

### Cost

	Budgeted	Current Spend
Cost	\$118,492	\$26,254
Man-hours	925	



# Focus

District D  
167 Customer interruptions

## Pontchartrain Park Feeder 512 LFUS 17538

### Project Description

Based on outage trends, LFUS 17538 on the Pontchartrain Park Feeder 512 was identified as having multiple repeat outages. Based on this trend, an inspection was performed on the line sections behind the device and all degraded equipment identified. The work is expected to result in an annual reduction of 167 customer interruptions. This work will include replacing 1 pole, 33 crossarms, 66 crossarm braces, 5 guy strains, 3 lightning arresters, relocating 9 fuse switches, installing 14 Hendrix grounds, 11 pole grounds, and 16 animal guards.

Work will occur in the area from Filmore Ave. to Mirabeau Ave. and Warrington Dr. to St. Anthony Ave.

### Commentary

- Construction started 10/12/18

**Project Status: CONSTRUCTION**

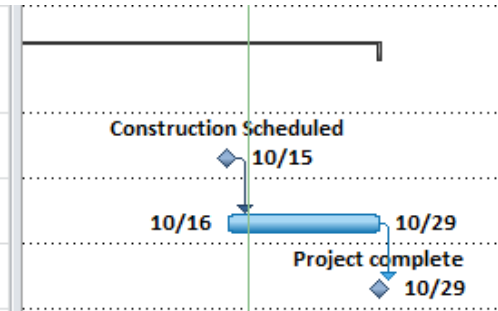
### Issues/Risks

N/A

### Changes

N/A

<input type="checkbox"/> FC18N019 TU18-013T Ponch Park 512 LFUS 17538	Wed 8/1/18	Mon 10/29/18
Construction Scheduled	Mon 10/15/18	Mon 10/15/18
Construction phase	Tue 10/16/18	Mon 10/29/18
Project complete	Mon 10/29/18	Mon 10/29/18



### Cost

	Budgeted	Current Spend
Cost	\$68,420	\$ 11,795
Man-hours	586	

# Focus

## Napoleon Feeder 1915 RCLR 23891

District B  
382 Customer interruptions

### Project Description

Based on outage trends, RCLR 23891 on the Napoleon Feeder 1915 was identified as having multiple repeat outages. Based on this trend, an inspection was performed on the line sections behind the device and all degraded equipment identified. The work is expected to result in an annual reduction of 382 customer interruptions. This work will include replacing 35 poles, 253 crossarms, 34 guy strains, 13 lightning arrester, 45 fuse switches, 62 Hendrix grounds, 62 pole grounds, 72 animal guards, and 18 disconnect switches.

Work will occur in the triangle from MLK and Magnolia St. to S. Liberty and Gravier St.

### Commentary

- 4 WRs awaiting crew availability

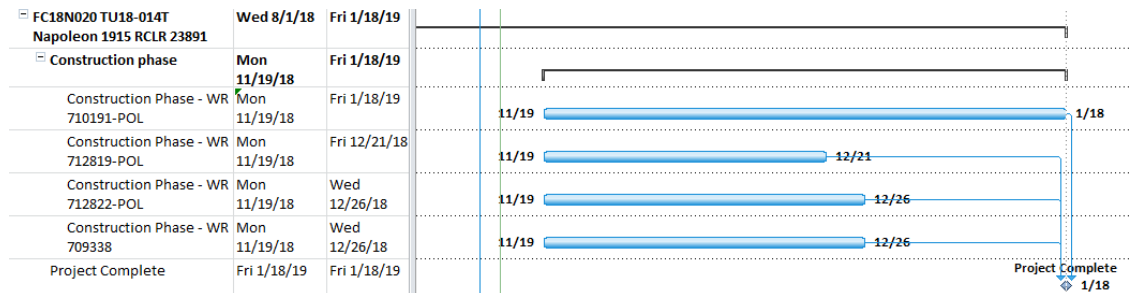
**Project Status: Construction Queue**

### Issues/Risks

N/A

### Changes

N/A



### Cost

	Budgeted	Current Spend
Cost	\$618,278	\$ 53,961
Man-hours	4,790	

# Focus

District D  
157 Customer interruptions

## Almonaster Feeder 615 LFUS 36957

### Project Description

Based on outage trends, LFUS 36957 on the Almonaster Feeder 615 was identified as having multiple repeat outages. Based on this trend, an inspection was performed on the line sections behind the device and all degraded equipment identified. The work is expected to result in an annual reduction of 157 customer interruptions. This work will include replacing 13 poles, 102 crossarms, 162 crossarm braces, 22 guy strains, 22 lightening arrestors, relocate 24 fuse switches, install 30 Hendrix ground, 30 pole grounds, and 107 animal guards.

Work will occur in the triangle from St. Bernard and N. Galvez to Laharpe and N. Derbingy St.

### Commentary

- 1 WR in construction
- 1 WR complete 11/9/18.

Project Status: **CONSTRUCTION**

### Issues/Risks

N/A

### Changes

N/A



### Cost

	Budgeted	Current Spend
Cost	\$278,986	\$ 11,638
Man-hours	2,291	

# Focus

## Joliet Feeder 2026 LFUS 43673

District A  
149 Customer interruptions

**Project Description**

Based on outage trends, LFUS 43673 on the Joliet Feeder 2026 was identified as having multiple repeat outages. Based on this trend, an inspection was performed on the line sections behind the device and all degraded equipment identified. The work is expected to result in an annual reduction of 149 customer interruptions. This work will include replacing 6 poles, 8 crossarms, 6 crossarm braces, 2 guy strains, 7 lightening arresters, relocating 1 fuse switch, installing 10 Hendrix grounds, 4 pole grounds, and 16 animal guards.

Work will occur in the area from Mistletoe and Fig to Hamilton and Last St.

**Commentary**

- Construction started 10/2/18

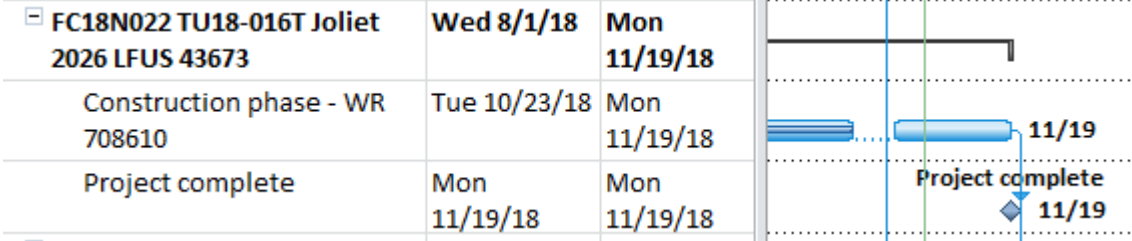
**Project Status: CONSTRUCTION**

**Issues/Risks**

N/A

**Changes**

N/A



**Cost**

	Budgeted	Current Spend
Cost	\$67,937	\$ 8,260
Man-hours	553	

# Focus

District B

147 Customer interruptions

## Napoleon Feeder 1914 LFUS 99924

### Project Description

Based on outage trends, LFUS 99924 on the Napoleon Feeder 1914 was identified as having multiple repeat outages. Based on this trend, an inspection was performed on the line sections behind the device and all degraded equipment identified. The work is expected to result in an annual reduction of 147 customer interruptions. This work will include replacing 19 poles, 120 crossarms, 18 guy strains, relocate 33 fuse switches, install 29 Hendrix grounds, 29 animal guards, and address 4 vegetation issues.

Work will occur in the area from Eleonore and Perrier, to Nashville and Tchoupitoulas.

### Commentary

- 1 WR complete
- 2 WRs in construction

**Project Status: CONSTRUCTION**

### Issues/Risks

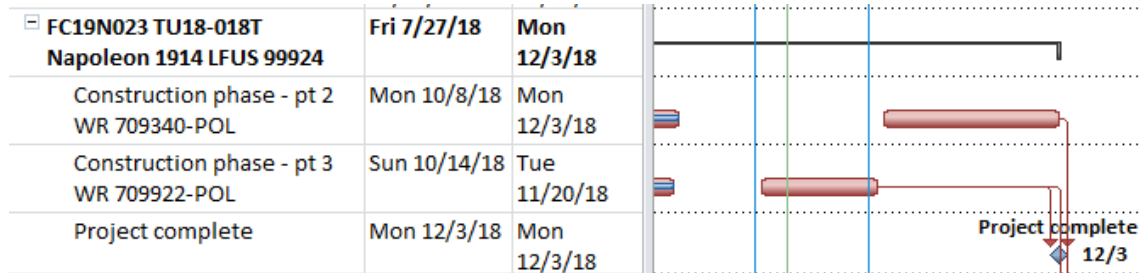
Delay due to tree trimming and travel crew deciding to return home.

### Changes

N/A

### Cost

	Budgeted	Current Spend
Cost	\$303,690	\$ 234,361
Man-hours	2,498	



# Focus

## Napoleon Feeder 1916 LFUS 50679

District A  
148 Customer interruptions

### Project Description

Based on outage trends, LFUS 50679 on the Napoleon Feeder 1916 was identified as having multiple repeat outages. Based on this trend, an inspection was performed on the line sections behind the device and all degraded equipment identified. The work is expected to result in an annual reduction of 148 customer interruptions. This work will include replacing 9 poles, 104 crossarms, 202 crossarm braces, 8 guy strain insulators, 21 lightening arresters, relocating 18 fuse switches, installing 25 Hendrix grounds, 20 pole grounds, 83 animal guards, and addressing 2 vegetation issues.

Work will occur in the area from S. Claiborne and Calhoun St. to Fountainbleu Dr. and Versailles St.

### Commentary

- 1 WR Complete
- 1 WR in construction

**Project Status: CONSTRUCTION**

### Issues/Risks

N/A

### Changes

N/A

### Cost

	Budgeted	Current Spend
Cost	\$232,795	\$ 29,443
Man-hours	1,842	

FC18N024 TU18-017T Napoleon 1916 LFUS 50679	Wed 8/1/18	Mon 11/19/18	FC18N024 TU18-017T Napoleon 1916 11/19
Construction phase - Pt 2 WR 708616	Mon 10/22/18	Mon 11/19/18	11/19
Project complete	Mon 11/19/18	Mon 11/19/18	Project complete 11/19

# Focus

## Napoleon Feeder 1916 SBKR 1916

District A  
1,947 Customer interruptions

### Project Description

Based on outage trends, SBKR 1916 on the Napoleon Feeder 1916 was identified as having multiple repeat outages. Based on this trend, an inspection was performed on the line sections behind the device and all degraded equipment identified. The work is expected to result in an annual reduction of 148 customer interruptions. This work will include replacing 28 poles, 258 crossarms, 33 insulators, 14 Guy Strains, 37 lightning arresters, 75 Hendrix grounds, 10 Pole Grounds, 23 animal guards, 12 disconnect switch, 4 AAAC sleeve, repainting 17 damaged switches, and relocating 29 fuse switches.

Work will occur in the area from S. Claiborne Ave. to Tchoupitoulas and Napoleon to Louisiana.

### Commentary

- 1 WR 45% complete
- 1 WR 10% complete

Project Status: **CONSTRUCTION**

### Issues/Risks

N/A

### Changes

N/A

### Cost

	Budgeted	Current Spend
Cost	\$621,299	\$637,825
Man-hours	7,545	